

CMFRI

ensuring sustainability

Consultancy Services



Central
Marine
Fisheries
Research
Institute





Major Clients of the CMFRI

INTERNATIONAL

M/s. Care India, Mumbai, (UN Organization)
M/s. Hardy Exploration and Production (Inc), Chennai
M/s. Bahrain Society of Pearls and Oysters, Bahrain

GOVERNMENT

Andaman Nicobar Administration, Port Blair,
Department of Tourism, Govt. of Kerala,
Department of Fisheries, U. T., Pondicherry,
Ministry of Agriculture, Govt. of India, New Delhi
Aquaculture Authority of India, Govt. of India
Department of Forest and Environment, Gujarat,
C-Mars (CSIR), Trivandrum, Kerala,
NEERI (CSIR), Nagpur,
Rajiv Gandhi Centre for Aquaculture, Myladumthurai, Trivandrum
Annamalai University, Chidambaram, Tamil Nadu

PUBLIC SECTOR

M/s. MRPL, Mangalore,
M/s. KIOCL, Mangalore,
M/s. Cochin Port Trust, Kochi ,
M/s. BHEL, Thiruchirapalli
M/s. Indira Gandhi Centre for Atomic Research, Kalpakam

PRIVATE SECTOR

M/s. Indian Tropical Agro products Pvt., Tuticorin,
M/s. Noava Foods Pvt. Ltd., Alappuzha
M/s. Tharakan Foods pvt. Ltd., Alappuzha,
M/s. Shilpi Aquaculture Pvt. Ltd., Lakshadweep,
M/s. GPOL, Mangalore,
M/s. Gulfar Hotels Pvt. Ltd., Kochi

Central Marine Fisheries Research Institute

Post Box No. 1603, Kochi - 682 018, Kerala State, India
Tel : 0091-484-394867. Fax : 0091-484-2394909
Telegram : CADALMIN, ERNAKULAM
E-mail : mdemfri@md2.vsnl.net.in
Website : <http://www.cmfri.com>



Published by : The Director, C.M.F.R.I.

The Central Marine Fisheries Research Institute

The Central Marine Fisheries Research Institute (CMFRI), a premier Institute under the Indian Council of Agricultural Research (ICAR), is currently engaged in developing an effective partnership between researchers and user groups through short-term and long-term training, consultancy and contract services in areas of expertise developed by the institute and topics of national / regional importance.

The Institute has developed and periodically updated many technologies in the areas of



marine capture fisheries, sea farming, conservation and marine environment management. With a view to institutionalizing the transfer of

technologies, a Consultancy Processing Cell (CPC) was created in CMFRI in 1997 as per ICAR norms for effectively serving the needs of clients.

The Institutes activities are carried out from its HQ at Kochi, 3 regional and 9 research centers spread along the Indian coast. A large group of experts in multidisciplinary marine research and allied subjects supported by fully equipped laboratories and trained technical staff are involved in the activities of the institute. The services are available for all user groups through consultancy / contract services managed by the Institute as per ICAR norms.

The Major Consultancy Areas

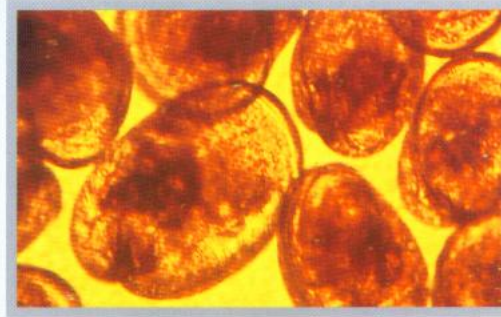
Marine Environment

- Primary & Secondary Production
- Physical & Chemical data
- Pollution monitoring
- Baseline Oceanographic data
- EIA Studies
- Assessment of carrying capacity of ecosystems
- Assessment of Biodiversity
- Bioprospecting
- Water & Soil analysis
- Environmental criteria for farm site selection



Fisheries Management

- Planning & implementation of sample surveys
- Coastal village/district wise fisheries production data collection, & interpretation.
- Craft/ gear infrastructure data generation and analyses
- Species-wise marine living resource production data
- Stock estimation and biological information for planning & management
- Trophic modeling & simulation of fishery scenarios
- Training on sampling methodology
- Fish stock assessment related computer software
- Generation, analyses and interpretation of socioeconomic data on craft-gear combination and marketing
- Taxonomy of marine organisms with special reference to pharmacological importance, commercially important ornamental fishes, corals, sponges, molluscs, echinoderms, crustaceans and their distribution, abundance and exploitation.
- Benthos, benthic biomass and ecology
- Pelagic and demersal resources, spatial and seasonal production potential
- Fishing gear impact assessment on the habitat resources
- Exploited resources and their food web inter-relationship
- Fishery forecasting/ remote sensing, modeling
- Marine aquarium planning, construction and management
- Artificial reef- site selection, construction and management
- Transmission and scanning electron microscopy



Coastal Aquaculture

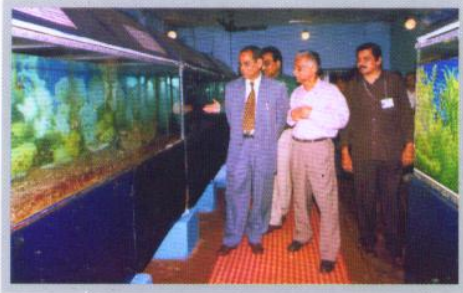
- Farm site selection; estimation and evaluation of carrying capacity of culture systems/habitats
- Selection of cultivable species
- EIA of various aquaculture practices
- Hatchery technology for Shrimps, crabs, edible oysters, mussels, clams, pearl oysters, sea cucumber and ornamental and edible finfishes
- Large scale seed production and transport
- Physiology, nutrition, pathology and genetics of cultivable organisms
- Feed formulation
- Sea ranching and stock enhancement
- Micro-algal and live feed culture technologies

Mariculture Technology Packages

- Marine Penaeid Shrimp farming
- Crabs/Lobster fattening and live transport
- Edible oyster culture
- Mussel culture
- Clam culture/ relaying
- Pearl oyster farming and pearl production
- Finfish culture and live transport
- Sea cucumber culture
- Seaweed culture

Training

- Fisheries resources, conservation and management
- Mariculture practices
- Underwater diving
- Sampling methodology, fish stock assessment related computer software



Since 1997, the institute has been offering consultancy services to industries in broad areas like marine pollution, EIA studies, underwater ecology and allied miscellaneous areas. The Institutes consultancy programmes, training and contract research are available to a wide spectrum of government, public sector and private sector agencies at competitive rates.



Case Processing Flow Chart

